

# DPPTCC family

Gfast SmartWire multi-port CPE Media converter panels  
High Performance twisted pair to coax G.fast conversion  
Version with **RF VIDEO SPLITTER** & **REVERSE POWER** pass-through

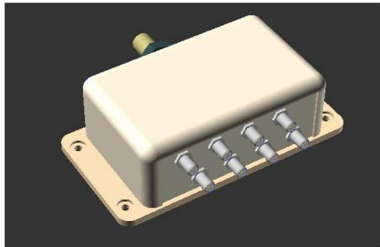


## Product description

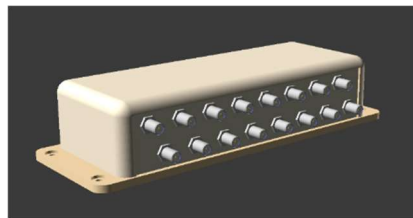
---

This product converts RJ11 twisted pair conversion to coaxial F connections. Can include integrated video signal. Can support reverse power pass-through

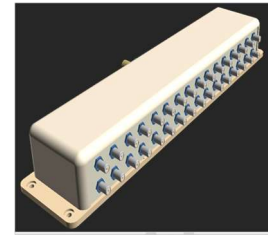
Designed and developed for high performance ultra-broadband solutions such as VDSL2 and G.fast



Media converters  
8/16 ports



Media converter  
with RF video  
input and RPF  
options



## Features

---

- Simple, fast and affordable G.fast installation
- Connects to DPU feed and G.fast modem
- Eliminates need for multiple DPU SKUs for hybrid installation. Scalable for port count increase
- Avoids mixing and disturbance between G.fast, Broadcast and TV signals (option)
- Compatible with LEA and ETSI specification reverse power feed injectors (option)

## Specifications

---

**Dimensions:** 75 x 56 x 27 mm (3 x 2.2 x 1.1 inches) with connectors

**Weight:** 120g (4.2 oz)

### Characteristics:

- TV bandwidth 260MHz – 2 GHz ; TV to G.fast isolation > 50dB
- Coaxial port impedance unbalanced 75 ohms; case isolation 50-60Hz, Min 1 kVrms
- Lightning to case 100/700 us, Max 1.5 kV; transverse power 50-60Hz, Max 250 Vrms
- Port unbalance LCL compliant with ETSI TS 101 952-1
- VDSL/G.fast Operating Frequency Bandwidth 30kHz-212MHz

## Temperature:

- Operating Temperature: 23° F to 113° F (-5°C to 45° C)
- Storage Temperature: -40° F to 176° F (-40°C to 80° C)
- Relative humidity 5% to 95%

**Port protection:** Lightning to coaxial port 1.2/50 – 8/20 CWG, Max 0.8kV

## Certification

- CE Marked, UL 94 V-0 CSA, EN60950, RoHS

## Physical Interface

- Pre-connectorized 16 individual-shielded twisted pair cables from DPU. Connector is DPU vendor dependent
- 16 Coax female F – connectors to subscriber drop, 75 Ohms unbalanced
- Option : RJ21 connector to reverse power controller, 16 lines DC

## Option for 4 or 8 ports, various connectors for DPU

Parameter	Frequency	Performance
Insertion loss	30 kHz to 30 MHz	< 0.5 dB
	30 MHz to 106 MHz	< 1 dB
	160 MHz to 212 MHz	< 2 dB
Return loss	30 kHz to 30 MHz	< 20 dB
	30 MHz to 106 MHz	< 14 dB
	160 MHz to 212 MHz	< 10 dB

LEA Part Number	Description
DPPTC0B8HTH0100 / DPPTC0B16HTH0100	8-port / 16-port Smart-wire panel TP Coax media converter
DPPTC0S8HTH0100 / DPPTC0S16HTH0100	8-port / 16-port Smart-wire panel TP Coax media converter & reverse power pass-through
DPPTCCB8HTH002 / DPPTCCB16HTH002	8-port / 16-port Smart-wire panel TP Coax media converter with RF TV input
DPPTCCS8HTH002 / DPPTCCS16HTH002	8-port / 16-port Smart-wire panel TP Coax media converter with RF TV input & reverse power pass-through

LEA Networks France (HQ) 132-134 Boulevard de Verdun 92400 Courbevoie Tel. +33 1 49 97 05 30	LEA Networks USA 6264 Oakton St. Chicago IL 60053 Tel. +1 847-673-1853	LEA Technologies China 深圳市福田区沙头街道车公庙 泰然工业区204栋西座5C Tel. +86 755 8287 6321	Product specification is subject to change without notice. LEA Networks disclaims any and all liability for any errors, inaccuracies or incompleteness contained in this datasheet.
LEA Networks — <a href="http://www.lea-networks.com">http://www.lea-networks.com</a> — mail: <a href="mailto:sales@lea-networks.com">sales@lea-networks.com</a>			